

## RD4-C TYPE

### Helical Clamp Screw Fixation Type

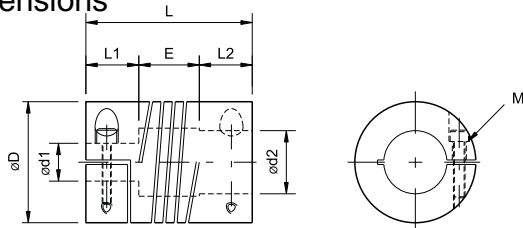


#### Parameters

Model	Rated Torque (N·m)	Max Torque (N·m)	Max Rotational Speed(min-1)	Moment of Inertia (kg·m <sup>2</sup> )	Static Torsional Stiffness(N.m/rad)	Parallel Misalignment (mm)	Angular Misalignment(°)	Axial Misalignment (mm)	Weight(g)
RD4-16C	0.4	0.8	10000	3.74x10 <sup>-7</sup>	20	0.1	3	0.2	11.9
RD4-20C	0.7	1.4	9000	1.03x10 <sup>-6</sup>	30	0.1	3	0.2	21.2
RD4-25C	1.2	2.4	8000	3.04x10 <sup>-6</sup>	48	0.1	3	0.25	39.7
RD4-32C	2.0	4.0	7000	1.03x10 <sup>-5</sup>	140	0.15	3	0.3	82.5
RD4-42C	4.8	9.6	6000	3.63x10 <sup>-5</sup>	320	0.15	3	0.3	168.2
RD4-48C	8.2	16.4	4000	7.44x10 <sup>-5</sup>	640	0.15	3	0.3	263.7
RD4-19CS	1.0	2.0	8000	2.4x10 <sup>-6</sup>	230	0.1	2	0.15	40
RD4-25CS	2.2	4.4	6000	7.3x10 <sup>-6</sup>	320	0.1	2	0.15	96
RD4-29CS	3.1	6.2	5000	2.6x10 <sup>-5</sup>	790	0.1	2	0.15	134
RD4-38CS	7.5	15	4500	8.6x10 <sup>-5</sup>	980	0.1	2	0.15	268
RD4-51CS	14	28	4500	3.0x10 <sup>-4</sup>	1450	0.1	2	0.15	392

\*

#### Dimensions



Unit (mm)

Model	d1 · d2		D	L	L1	L2	E	M
	Min	Max						
RD4-16C	3	6.35	16	22	7	7	8	M2.6
RD4-20C	4	8	20	25	8	8	9	M2.6
RD4-25C	5	12	25	30	10	10	10	M3
RD4-32C	6	15	32	38	13	13	12	M4
RD4-42C	10	20	42	45	16	16	13	M5
RD4-48C	12	25	48	54	19	19	16	M5
RD4-19CS	3	6.35	19.1	22.9	3.1	3.1	16.7	M2.5
RD4-25CS	5	10	25.4	31.8	4.15	4.15	23.5	M3
RD4-29CS	6	12.7	28.6	38.1	5.0	5.0	28.1	M3
RD4-38CS	8	15	38.1	41.3	5.9	5.9	29.5	M5
RD4-51CS	12	19	50.8	51.0	6.7	6.7	37.6	M6

#### Standard Bore Diameter

Model	Standard Bore Diameter d1.d2(mm)																			
	3	4	5	6	6.35	8	9.525	10	12	12.7	14	15	16	18	19	20	22	24	25	
RD4-16C																				
RD4-20C																				
RD4-25C																				
RD4-32C																				
RD4-42C																				
RD4-48C																				

**RD4 - 20C□ - 6 - 8 - L(25)**