

RD1-CR Series

Jaw Clamp Screw Fixation Type

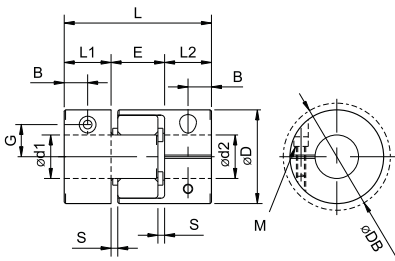


Parameters

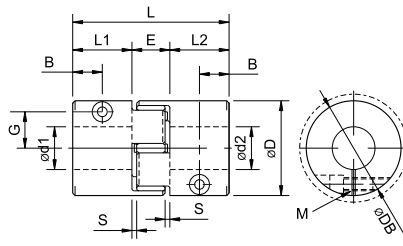
Model	Rated Torque (N-m)	Max Torque (N-m)	Max Rotational Speed(min-1)	Static Torsional Stiffness(N.m/rad)	Parallel Stiffness (N/mm)	Moment of Inertia (kg-m ²)	Parallel Misalignment (mm)	Angular Misalignment(°)	Axial Misalignment (mm)	Weight(g)
RD1-014CR	2	4	10000	21	380	1.98x10 ⁻⁷	0.10	1	0~+0.6	7
RD1-020CR	5	10	10000	43	400	1.09x10 ⁻⁶	0.10	1	0~+0.8	19
RD1-030CR	12.5	25	10000	136	650	6.19x10 ⁻⁶	0.10	1	0~+1.0	45
RD1-040CR	17	34	10000	1550	1700	4.01x10 ⁻⁵	0.10	1	0~+1.2	160
RD1-055CR	60	120	7000	2000	1350	1.63x10 ⁻⁴	0.10	1	0~+1.4	340
RD1-065CR	160	320	5900	3100	1400	3.69x10 ⁻⁴	0.10	1	0~+1.5	540
RD1-080CR	325	650	4800	6000	1710	1.04x10 ⁻³	0.10	1	0~+1.8	1000

Dimensions

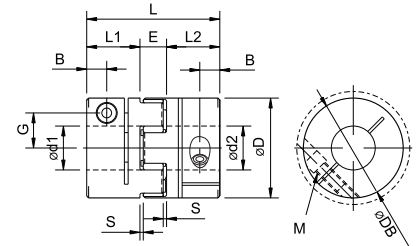
RD1-014~030



RD1-040



RD1-055~080



Unit (mm)

Model	d1 · d2		D	DB	L	L1 · L2	E	S	B	G	M	Tightening Torque(N.m)
	Min	Max										
RD1-014CR	3	6	14	16.1	22	7	8	1	3.5	4.8	M2	0.4
RD1-020CR	4	8	20	20	30	10	10	1	5	6.5	M2.5	1
RD1-030CR	6	14	30	30	35	11	13	1.5	5.5	10.5	M3	1.5
RD1-040CR	8	20	40	43.2	66	25	16	2	12.5	15	M5	7
RD1-055CR	10	28	55	55	78	30	18	2	10.5	20	M6	14
RD1-065CR	14	35	65	69.8	90	35	20	2.5	11.5	24.5	M8	30
RD1-080CR	19	45	80	80	114	45	24	3	11.5	30	M8	30

Standard Bore Diameter and Allowable Torque

Model	Standard Bore Diameter d1.d2(mm) and Allowable Torque(N.m)																							
	3	4	5	6	6.35	7	8	10	11	12	14	15	16	18	19	20	22	24	25	28	30	35	42	
RD1-014CR	0.31	0.42	0.54	0.65																				
RD1-020CR		1.2	1.6	2.1	2.2	2.6	3.0																	
RD1-030CR				2.0	2.2		3.4	4.7	5.4	6.0	7.4													
RD1-040CR							8	16		23	31	34	34		34									
RD1-055CR												38	41	48	51	54	61	67	71	80				
RD1-065CR																61	68	75	79	89	96	114		
RD1-080CR																				108	121	151	194	

Ordering Information **RD1 - 055 CR - 19 - 20 - L(78)**
 OD: Outer Diameter, Clamp: Clamp Type, Buffer Unit Type R: Red(Hardness 97 Tight Fit), Length: 78mm, Bore Diameter: d1-d2