

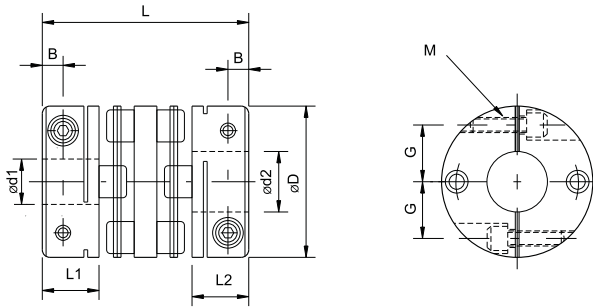
RD2-B TYPE Double Reed Type



Parameters

Model	Rated Torque (N·m)	Max Torque (N·m)	Max Rotational Speed(min-1)	Static Torsional Stiffness(N·m/rad)	Parallel Stiffness (N/mm)	Moment of Inertia (kg·m ²)	Parallel Misalignment (mm)	Angular Misalignment(°)	Axial Misalignment (mm)	Weight(g)
RD2-26BD	1.4	2.8	24000	1000	32	3.40×10 ⁻⁶	0.15	1(单侧)	±0.33	35
RD2-34BD	2.8	4	18000	1600	32	1.15×10 ⁻⁵	0.18	1(单侧)	±0.40	69
RD2-39BD	4.0	6	16000	3200	56	2.68×10 ⁻⁵	0.24	1(单侧)	±0.50	123
RD2-44BD	8.7	10	14000	3900	40	4.26×10 ⁻⁵	0.24	1(单侧)	±0.60	151
RD2-56BD	20	25	11000	9000	24	1.41×10 ⁻⁴	0.28	1(单侧)	±0.80	304
RD2-68BD	55	60	9000	18000	38	3.77×10 ⁻⁴	0.34	1(单侧)	±0.90	556
RD2-82BD	80	100	7000	35000	64	1.03×10 ⁻³	0.52	1(单侧)	±1.10	1051
RD2-94BD	150	180	6000	40000	54	1.78×10 ⁻³	0.52	1(单侧)	±1.30	1373

Dimensions



Unit (mm)

Model	d1 · d2		D	L1 · L2	L	B	G	M	Tightening Torque(N·m)
	Min	Max							
RD2-26BD	5	10	26	10.75	32.3	3.3	9.5	M2.5	1.0
RD2-34BD	8	14	34	12.4	37.8	3.75	12.5	M3	1.5
RD2-39BD	10	16	39	15.5	48.0	4.5	14	M4	3.4
RD2-44BD	10	19	44	15.5	48.0	4.5	17	M4	3.4
RD2-56BD	14	25	56	20.5	59.8	6.0	22	M5	7.0
RD2-68BD	19	35	68	25.2	73.3	7.75	26.5	M6	14
RD2-82BD	24	40	82	30.0	98.0	9.0	28	M8	30
RD2-94BD	30	45	94	30.0	98.6	9.0	34	M8	30

Standard Bore Diameter

Model	Standard Bore Diameter d1,d2(mm)																				
	5	8	9	10	11	12	14	15	16	18	19	20	22	24	25	28	30	35	40	45	
RD2-26BD	●	●	●	●																	
RD2-34BD		●	●	●	●	●	●														
RD2-39BD			●	●	●	●	●	●													
RD2-44BD				●	●	●	●	●	●	●											
RD2-56BD							●	●	●	●	●	●	●	●	●						
RD2-68BD											●	●	●	●	●	●	●	●			
RD2-82BD												●	●	●	●	●	●	●	●	●	●
RD2-94BD																	●	●	●	●	●

Ordering Information

RD2 - 34BD - 10 - 12 - L(32.3)
 OD ——— Type ——— Double Reed ——— Bore Diameter:d1-d2 ——— Length