

RD3-BC Series

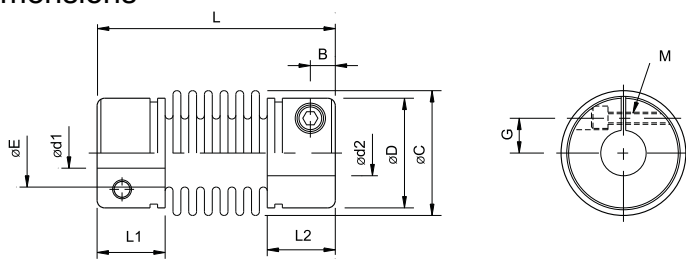
Double-wall Bellows Clamp Type



Parameters

Model	Rated Torque (N.m)	Max Torque (N.m)	Max Rotational Speed(min-1)	Moment of Inertia (kg.m ²)	Static Torsional Stiffness(N.m/rad)	Parallel Misalignment (mm)	Angular Misalignment(°)	Axial Misalignment (mm)	Weight(g)
RD3-17BC	0.9	1.8	20000	1.2×10^{-7}	400	0.10	2	±0.3	12
RD3-25BC	2	4	12000	6.5×10^{-7}	900	0.10	2	±0.5	30
RD3-40BC	12	24	12000	2.9×10^{-5}	6800	0.20	2	±0.7	120
RD3-56BC	20	40	10000	1.3×10^{-4}	18000	0.20	2	±0.8	250
RD3-63BC	60	120	8000	2.5×10^{-4}	33000	0.20	2	±0.9	370
RD3-80BC	170	250	8000	7.2×10^{-4}	63000	0.20	2	±1.2	660
RD3-99BC	270	400	8000	1.8×10^{-3}	111000	0.20	2	±1.2	1100

Dimensions



Unit (mm)

Model	d1 · d2		D	C	L1 · L2	L	E	B	G	M	Tightening Torque(N.m)
	Min	Max									
RD3-17BC	3	6	16.5	14.5	9	31.5	9	3.3	4.6	M2.5	1
RD3-25BC	6	10	24.5	24	13	42	16	4.5	7.5	M3	2
RD3-40BC	10	19	39.5	39.5	16.5	62	27	6	13	M5	7
RD3-56BC	12	30	56	56	20	70	38	8	19	M6	14
RD3-63BC	20	30	63	66	22	77	47	8.5	22	M8	30
RD3-80BC	30	43	79.5	82	26	92	60	10.5	28.5	M10	65
RD3-99BC	30	54	99	101	29	100	76	12	35	M12	115

Standard Bore Diameter

Model	Standard Bore Diameter d1.d2(mm)							
RD3-17BC	3×6	4×6	4.5×6	5×6	6×6			
RD3-25BC	6×7	6×8	7×8	8×8	8×10			
RD3-40BC	10×11	11×12	12×14	14×14	14×15	15×16	16×17	
RD3-56BC	12×16	14×16	15×16					
RD3-63BC	20×24	24×25	25×28	28×30				
RD3-80BC	30×35	30×42	35×35	35×42				
RD3-99BC	30×35	35×35						

Ordering Information

RD3 - 25BC - 6 - 8 - L(42)
 Outer Diameter Type Clamp Type Length Bore Diameter:d1-d2