

RD3-A Series

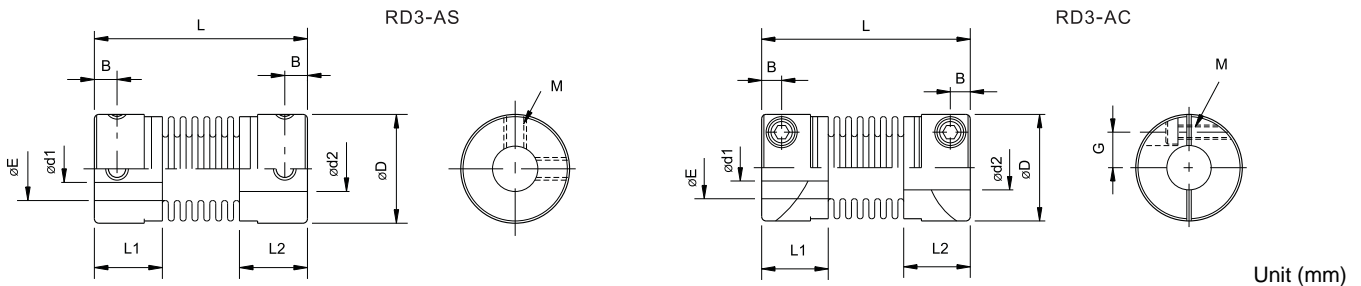
Single-wall Bellows Type



Parameters

Model	Rated Torque (N.m)	Max Torque (N.m)	Max Rotational Speed min ⁻¹	Moment of Inertia kg.m ²	Static Torsional Stiffness(N.m/rad)	Parallel Misalignment (mm)	Angular Misalignment(°)	Axial Misalignment (mm)	Weight(g)
RD3-16AS	1	2	39000	8.0x10 ⁻⁷	150	0.10	1.5	+0.4 -1.2	20
RD3-20AS	1.5	3	31000	2.3x10 ⁻⁶	220	0.15	2	+0.6 -1.8	37
RD3-25AS	2	4	25000	7.0x10 ⁻⁶	330	0.15	2	+0.6 -1.8	73
RD3-32AS	3	6	19000	2.1x10 ⁻⁵	490	0.20	2	+0.8 -2.5	130
RD3-12AC	0.5	1	52000	2.1x10 ⁻⁷	100	0.10	1.5	+0.4 -1.2	9.2
RD3-16AC	1	2	39000	8.1x10 ⁻⁷	150	0.10	1.5	+0.4 -1.2	22
RD3-20AC	1.5	3	31000	2.3x10 ⁻⁶	220	0.15	2	+0.6 -1.8	38
RD3-25AC	2	4	25000	6.9x10 ⁻⁶	330	0.15	2	+0.6 -1.8	74
RD3-32AC	3	6	19000	2.1x10 ⁻⁵	490	0.20	2	+0.8 -2.5	130

Dimensions



Model	d1 • d2		D	L1 • L2	L	E	B	G	M	Tightening Torque(N.m)
	Min	Max								
RD3-16AS	4	8	16	9	26.5	9.5	3	—	M3	0.7
RD3-20AS	5	10	20	10	32	12.5	3.5	—	M3	0.7
RD3-25AS	6	12	25	12	36.5	15	4.5	—	M4	1.7
RD3-32AS	6	14	32	13.5	42	21	5.5	—	M4	1.7
RD3-12AC	4	5	12	7.5	23.5	7	2.25	4	M2	0.5
RD3-16AC	5	6	16	9	26.5	9.5	3	5	M2.5	1
RD3-20AC	6	8	20	10	32	12.5	3.5	6.5	M2.5	1
RD3-25AC	8	10	25	12	36.5	15	4.5	9	M3	1.5
RD3-32AC	8	14	32	13.5	42	21	5	11	M4	2.5

Standard Bore Diameter

Model	Standard Bore Diameter d1.d2(mm)							
	3	4	5	6	8	10	12	14
RD3-16AS		●	●	●	●			
RD3-20AS			●	●	●	●		
RD3-25AS				●	●	●	●	
RD3-32AS				●	●	●		●
RD3-12AC		●	●					
RD3-16AC			●	●				
RD3-20AC				●	●			
RD3-25AC					●	●		
RD3-32AC					●	●	●	●

Ordering Information

