

产品选型手册

Product selection guide



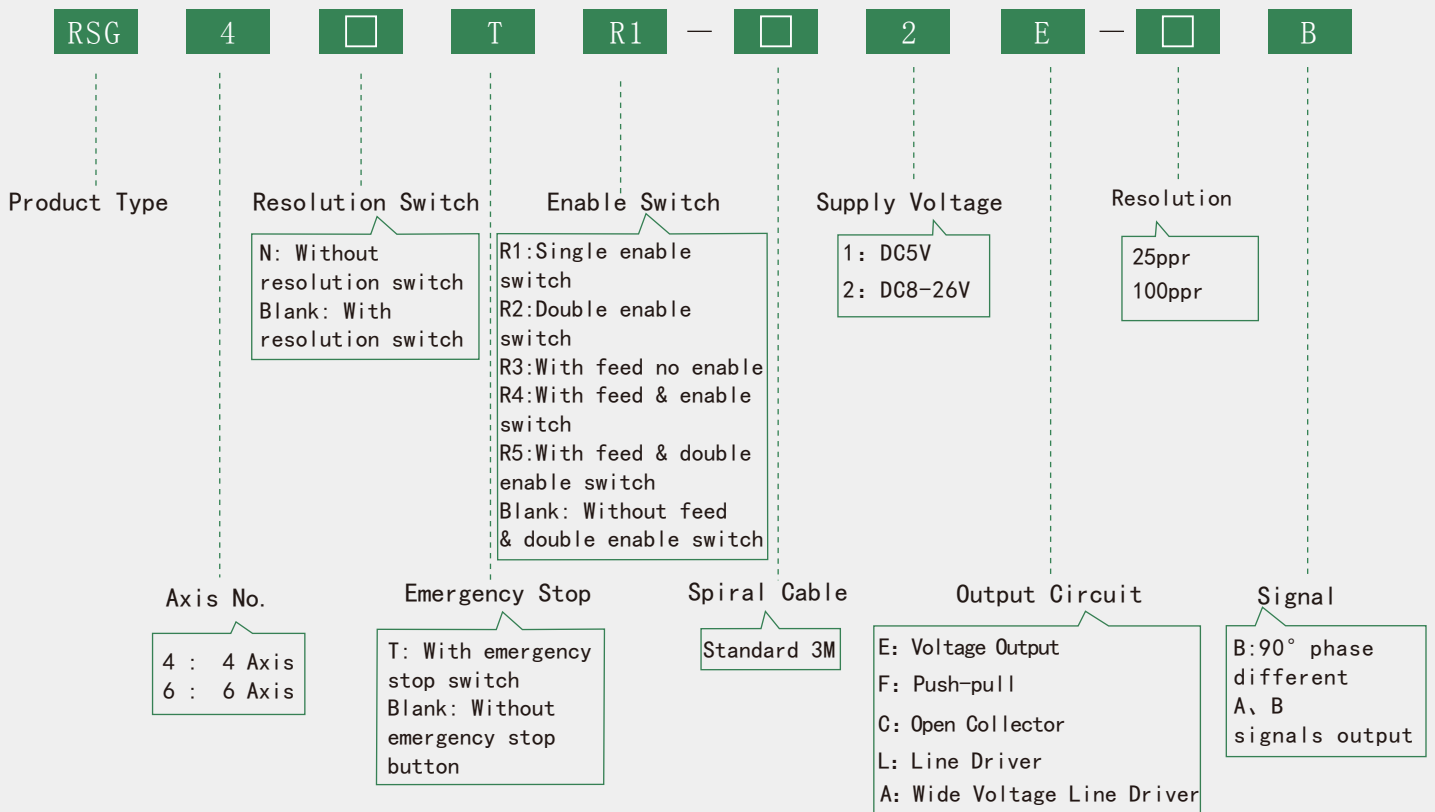
RSG Series

Applications & Features



With machine tool inching function.
 All-plastic housing, anti-oil, sealed.
 Emergency stop switch and reset switch optional.
 Housing with hook and pendant carrier.
 Widely applied in CNC machine tools.

Part Number



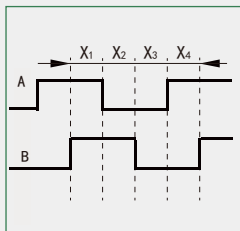
Electrical Specifications

Output Circuit	Supply Voltage DC (V)	Current Requirement (mA)	Output Voltage (V)		Rise Time (ns)	Fall Time (ns)	Frequency Response (kHz)
			V _H	V _L			
E (Voltage)	5±0.25	≤60	≥3.5	≤0.5	≤500	≤100	0~100
	8~26		≥V _{CC} -2.5	≤0.5	≤1500	≤300	
C (Open Collector)	5±0.25	≤60	/	/	/	/	0~100
	8~26		/	/	/	/	
L (Line driver)	5±0.25	≤100	≥2.5	≤0.5	≤200	≤200	0~100
A (Wide Voltage Line Driver)	8~26	≤80	≥V _{CC} -2.5	≤0.8	≤800	≤200	0~100
F (Push Pull)	5±0.25	≤60	≥3.5	≤0.8	≤300	≤200	0~100
	8~26		≥V _{CC} -2.5	≤1.0	≤500	≤200	

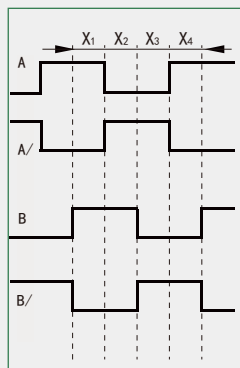
Output Circuit

E (Voltage)		F (Push-pull)		C (Open Collector)	L, A (Line Driver)
5V	8-26V	5V	8-26V		
					 L: 26C31 A: ET7272B

Output Waveform



Waveform for C, E, F output



Waveform for L, A output

- Wave Ratio : $X1+X2=0.5T \pm 0.1T$
 $X2+X3=0.5T \pm 0.1T$
- Phase Different : $Xn \geq 0.125T$ ($n=1, 2, 3, 4$)
- Absolute Angle Error: $\leq 0.2T$
- Cycle Error : $\leq 0.05T$
- $T=360^\circ / N$ (N =lines count per revolution)

MPG Function

Axis No.							Resolution Switch			Start (Recover)	Display (LED)		Emergency Stop			
OFF	X	Y	Z	4	5	6	X1	X10	X100	COM	DC 24V	OV LED	NC1	NC2	NC1	NC2

Environmental Specifications

Max. Speed	600r/min
Operating Temp.	-10~+60°C
Store Temp.	-20~+70°C
Size	166.5*78*70mm
Weight	Approx. 0.745kg

21 Pins Cable Wire, 4 Axis with Emergency Stop Button

Cable Color	YL	WH	BK	RD	LBU	GY	GY/BK	WH/BK	GN	OG	BN	BN/BK	YL/BK	OG/BK	GN/BK	PL/BK	RD/BK	BU/BK	PK/BK	PK	PL
L	A	B	OV	VCC	COM	X1	X10	X100	X	Y	Z	4	K1	K2	K3	K4	COM1	COM2	COM3	A/	B/
E	A	B	OV	VCC	COM	X1	X10	X100	X	Y	Z	4	K1	K2	K3	K4	COM1	COM2	COM3	/	/

