

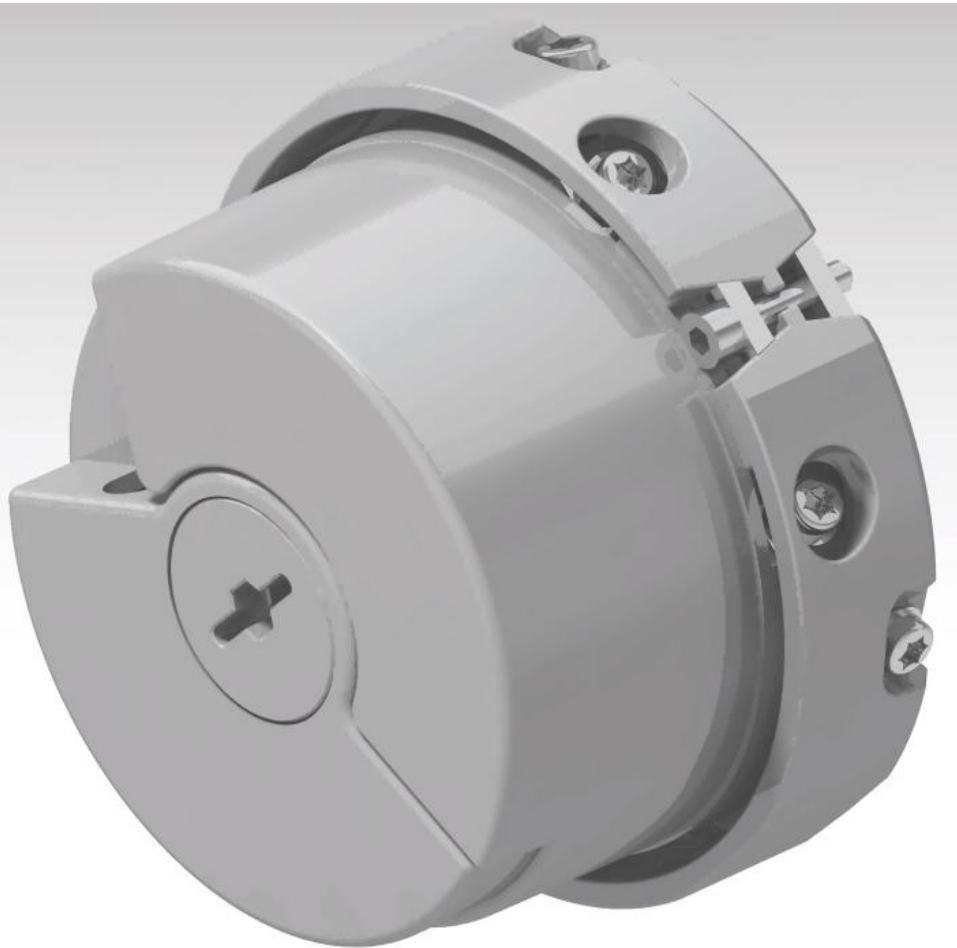
ROUNDSS^R

REN56U series

(Elevator/servo control
application)

High Resolution Optical
Encoder

Jan, 2022

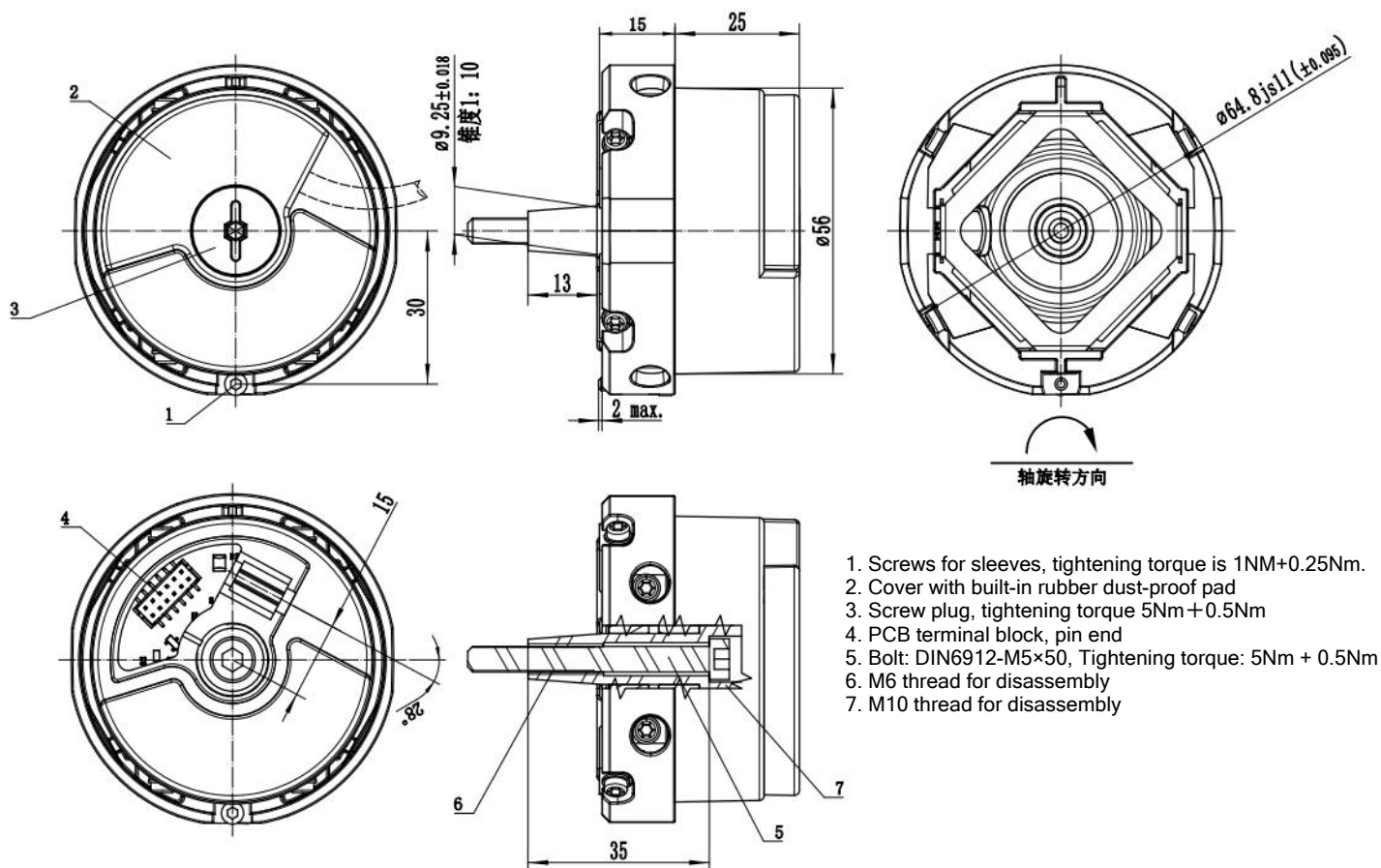


| Items | Specifications |
|--|--|
| Model | REN56U10-2048P-S-5V |
| Position values/revolution | 2048 |
| Incremental Signal | 1vpp |
| Index Mark | 1 |
| Frequency Response | 300KHZ |
| System accuracy | $\geq \pm 10''$ |
| Electrical connection | 14PIN Male Connector |
| Supply Voltage | DC5V \pm 0.25 |
| Power consumption (Max) | $\leq 0.7W$ |
| Current consumption (typical, no load) | 5V/105mA |
| Shaft Dia. | 9.25, 1:10 taper shaft |
| Allowable mechanical speed | 8000rpm |
| Starting torque | $\leq 0.001Nm$ (normal temperature 20°C) |
| Vibration shock | $\leq 100m/s^2$, 55...2000Hz $\leq 2500m/s^2$, 6ms |
| Max Operating Temperature | +120°C |
| Min Operating Temperature | -40°C |
| Protection Class | IP54 (after installation) |
| Weight | $\approx 0.55gkg$ |

REN56U series

- Simple installation
- Rigid coupling
- Flat coupling, allowing larger installation tolerances
- Multiple electrical interfaces, uniform mechanical dimensions

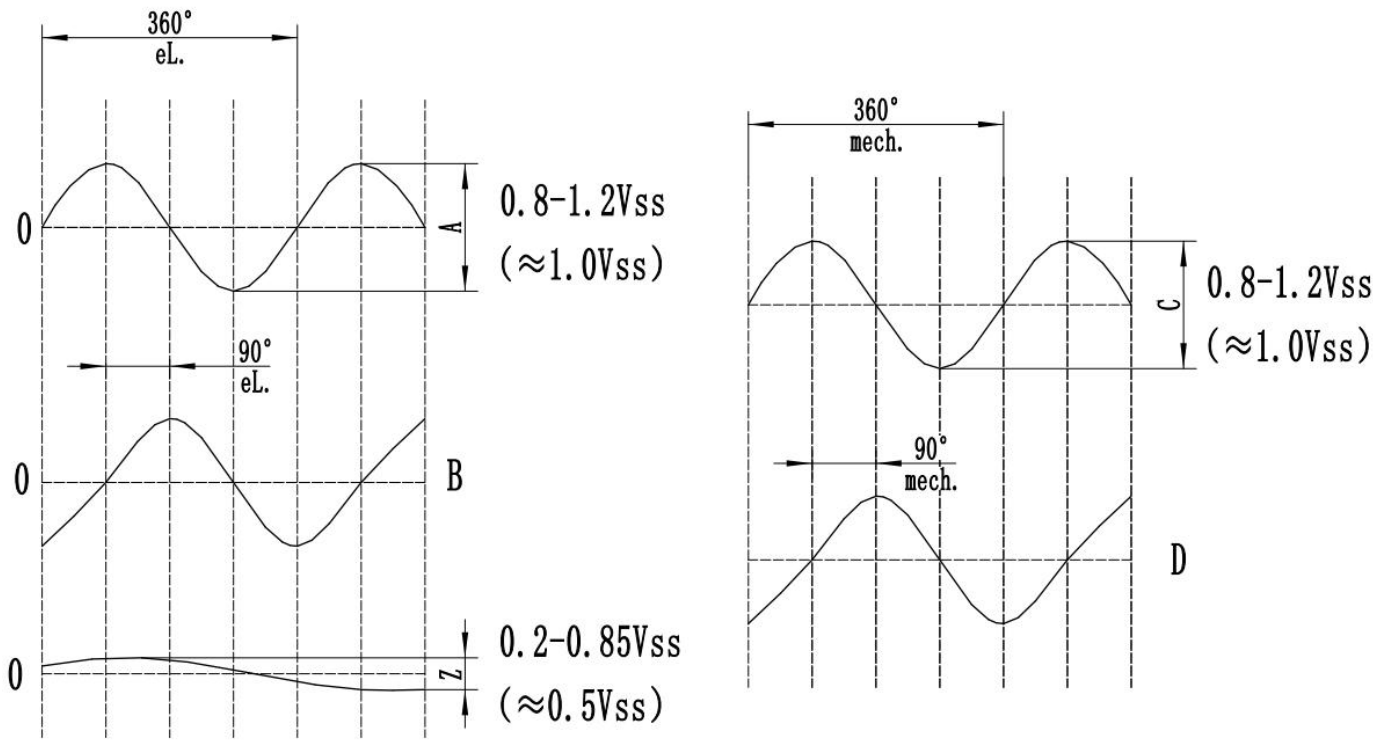
Mechanical Dimensions



Installation instructions

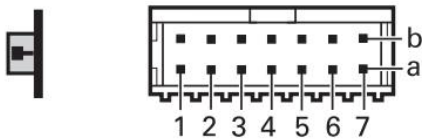
- This product is a precision instrument with precise mechanical structure and has been strictly adjusted before leaving the factory.
- Do not disassemble or modify by yourself.
- Do not reprocess the output shaft.
- Do not forcefully hit the output shaft.
- Do not reprocess the encoder housing.
- If the product fails due to manufacturing reasons within 18 months after leaving the factory, our company is responsible for free repair or replacement.
- In order to ensure the accuracy and service life of the product, please use the soft connection strictly according to the instructions. If the product is not installed properly, the manufacturer will not guarantee the damage!

Output Wave



Connections

14 PINS PCB Connector



| PIN | b1 | b2 | b3 | b4 | b5 | b6 | b7 |
|--------|-----|----|-----|----|-----|----|-----|
| Signal | VCC | D+ | B+ | Z+ | GND | A+ | C+ |
| PIN | a1 | a2 | a3 | a4 | a5 | a6 | a7 |
| Signal | C- | A- | GND | Z- | B- | D- | VCC |